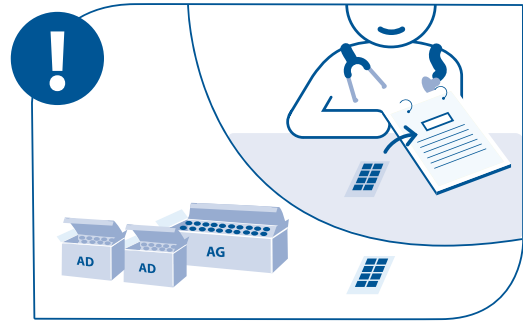
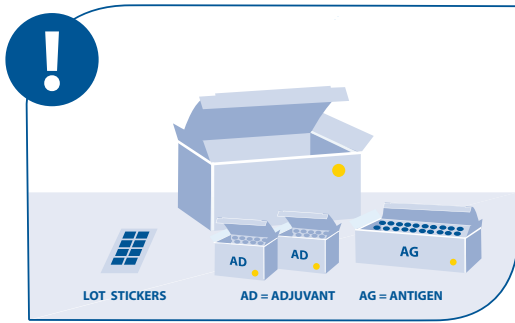
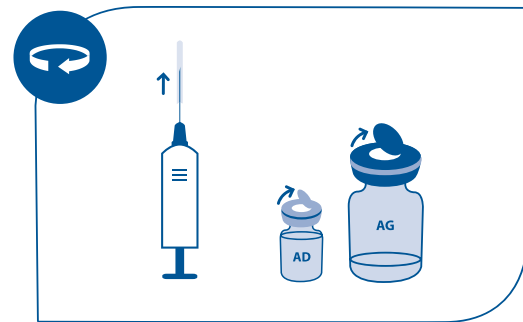
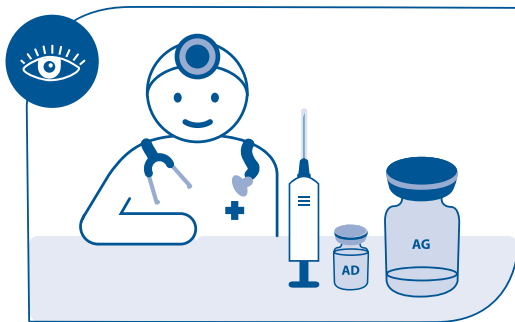


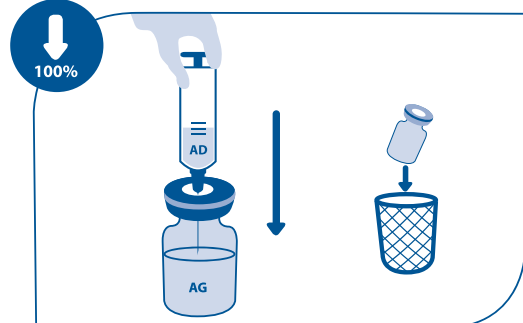
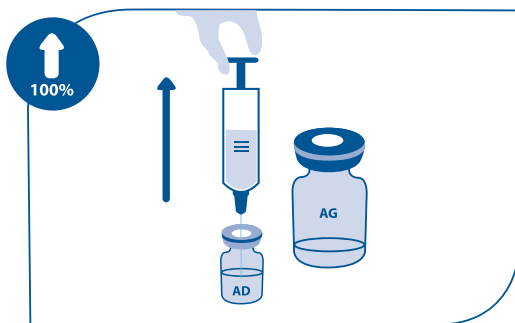
# PANDEMRIX® - Mixing Instructions



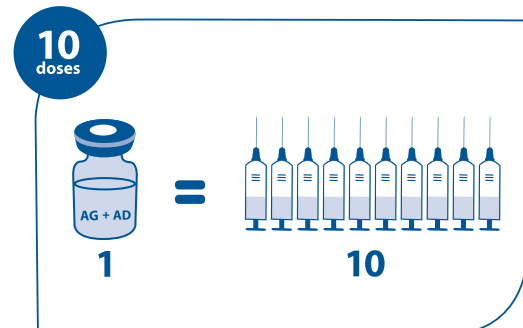
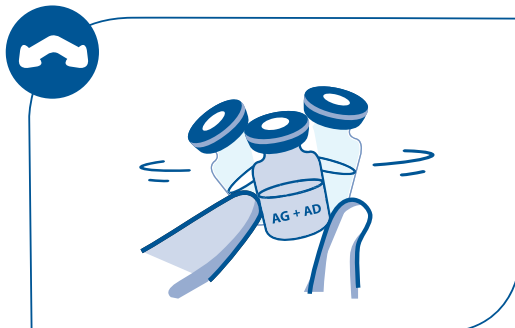
**Pandemrix®** consists of two vial containers  
 Vial A (Purple): multi-dose vial containing Antigen (suspension)  
 Vial B (Yellow): multi-dose vial containing the Adjuvant (emulsion)  
**Pandemrix®** must be reconstituted by adding the **Adjuvant to the Antigen**.



Before mixing the two components, allow the Adjuvant emulsion and Antigen suspension to reach room temperature, shake and inspect visually for any foreign particulate matter and/or abnormal physical appearance. If either are observed, discard the vaccine.



Mix the vaccine by withdrawing the contents of the Adjuvant emulsion (vial B) by means of a 5ml syringe using a 21 gauge needle (green) and add it to the vial containing the Antigen suspension (vial A).



Shake the mixture well. Write the date and time on the mixed vaccine vial. The mixed vaccine is a whitish emulsion. In the event of other variation being observed, discard the vaccine. The volume of Pandemrix® (5ml) after mixing corresponds to 10 adult doses of vaccine. Shake the vial prior to each administration. Withdraw the appropriate dose (0.5 ml) of vaccine into a syringe for injection. Replace the needle used for withdrawal with a needle suitable for intramuscular injection.

Do not leave the needle used for withdrawal in the vial in between drawing up of doses.

**Once reconstituted Pandemrix® must be used within 24 hours.**  
**Once reconstituted Pandemrix® must be kept at a temperature that is not above 25 degrees.**  
**Should be refrigerated if there is a delay between clinical sessions.**

**DO NOT FREEZE**